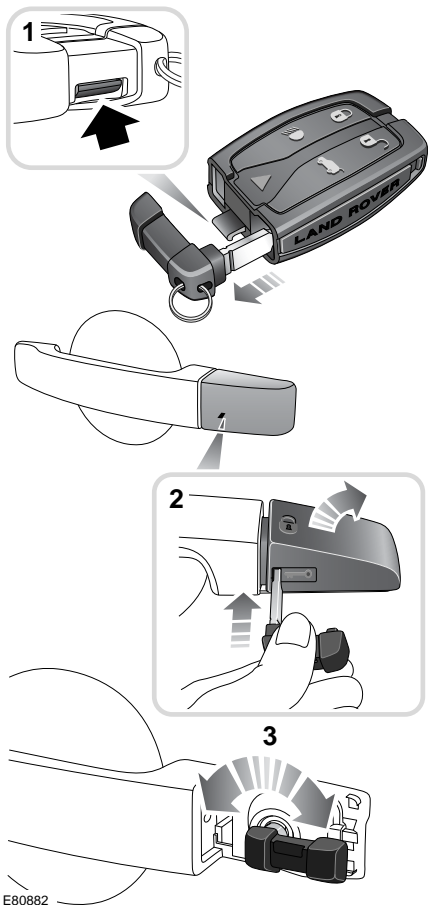


Keys and remote controls

USING THE KEY

Removing the cover

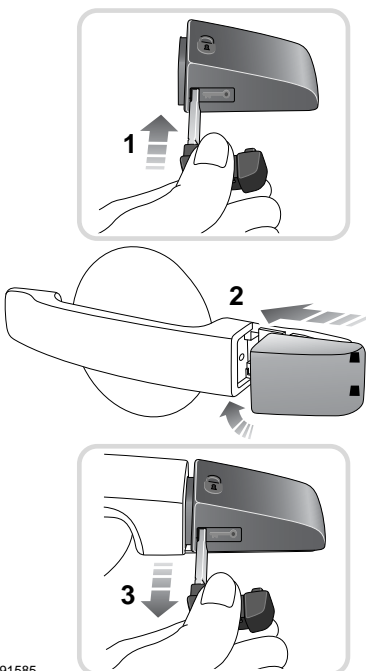


E80682

1. Press the release tab and pull out the key blade.
2. Fully insert the key blade to remove the driver's door lock cover.
3. Fully insert the key into the lock and rotate to unlock.

Note: When the door is opened the alarm will begin to sound. To silence the alarm, insert the remote into the start control unit.

Replacing the cover



E91585

1. Fully insert the key blade into the door lock cover.
2. Locate the rear of the lock cover using the tabs and close the cover.
3. Remove the key blade from the cover.

Keys and remote controls

GENERAL INFORMATION ON RADIO FREQUENCIES

Note: The radio frequency used by your remote control may be used by other devices. For example: amateur radios, medical equipment, wireless headphones, or other remote control devices. This may cause the frequency to be jammed, and prevent your remote control from operating correctly.

Environmental conditions can affect the operation of remote controls and the operating range may vary considerably depending on the vehicle's location.

FCC and Canadian warning statement

This device complies with part 15 of the FCC rules.

Operation is subject to the following two conditions:

1. This device may not cause harmful interference, and
2. this device must accept any interference received, including interference that may cause undesired operation.

Any changes or modifications not expressly approved by the party responsible for compliance could void the user's authority to operate the equipment.

This device complies with RSS-210 of Industry Canada.

Operation is subject to the following two conditions:

1. This device may not cause harmful interference, and
2. this device must accept any interference, including interference that may cause undesired operation of the device.

Transmitter FCC ID: NT8-TX9

IC : 3043A-TX9

Note: The FCC transmitter ID number is visible when the emergency key blade is removed.

USING THE REMOTE CONTROL

Remote control

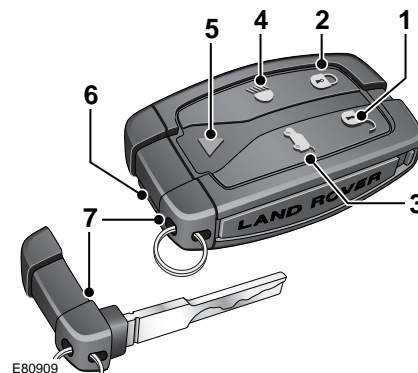
WARNING



Never leave the remote control in the vehicle if children or animals are also left in the vehicle. The vehicle's systems and remote control functions could be operated, which may result in injury.

Note: The operational range of the remote control will vary considerably depending on atmospheric conditions and interference from other transmitting devices.

The vehicle is supplied with two remote controls, but up to six can be programmed to the vehicle at any one time.



1. Unlock.
2. Lock.
3. Taildoor release.
4. Approach lighting.
5. Emergency alarm.
6. Key blade release tab.
7. Key blade.

Keys and remote controls

Unlocking



Press briefly to unlock the vehicle, and deactivate the alarm. The hazard warning lamps will flash twice to indicate that the vehicle is unlocked and the alarm has been deactivated. The interior lamps will illuminate to assist entry to the vehicle.

Single/Multi-point entry

When you press the unlock button your vehicle will unlock in one of two ways:

1. Unlock the driver's door and taildoor. A second press is required to unlock the remaining doors.
2. Unlock all doors, and the taildoor.

This security feature unlocks only the driver's door and taildoor. It can be disabled on individual remote controls by unlocking the vehicle then simultaneously pressing and holding the lock and unlock buttons for three seconds. The vehicle will lock and then unlock in the currently selected mode and the hazard warning lamps will flash twice to confirm the change. You can now unlock all doors with a single press. Repeating the procedure will re-enable single point entry.

Locking



Press briefly to lock the vehicle, and activate the alarm. The hazard warning lamps will flash to indicate that the vehicle is locked.

Automatic relocking

If a door, or the taildoor, are not opened within one minute of unlocking the vehicle, doors will lock again automatically.

Approach lighting



When approaching the vehicle during darkness press to switch on the approach illumination. Press again to turn the approach lamps off.



The approach illumination period set at the factory is thirty seconds. This can be configured by a Land Rover Dealer to provide illumination lasting between Zero and 180 seconds.

Taildoor



Press briefly to release the taildoor.

Emergency alarm



Press and hold for three seconds, or press twice within three seconds, to activate the horn and the hazard lamps.

Once active for more than five seconds the alarm can be cancelled by pressing the button and holding for three seconds, or pressing twice within three seconds.

Note: *The horn and hazard lamps will switch off automatically after two minutes and forty five seconds.*

Remote battery

The remote control batteries are recharged when the remote is docked and the engine is running. For this reason it is recommended that each remote is used for a minimum of four hours every six months. This will ensure that the batteries are kept charged and ready for use.